



STRADA-2X2S-T3

LEDiL standard 50x50 mm platform now in silicone for high temperature applications with universal IESNA Type III beam

The STRADA-2X2S is made from silicone to withstand extremely high temperatures and applications requiring high lumen outputs. The standardized 50x50 mm modular footprint and one screw fastening provides the flexibility to use the same luminaire design with silicone lenses as well.



FEATURES

- Standard 50x50 mm 2X2S platform
- Manufactured from optical grade silicone
- Black installation frame with one screw fastening
- Suitable for LEDs with high Tj
- Recommended to be used with a protective glass

TYPICAL APPLICATIONS

- Street lighting
- Outdoor area lighting
- Pavement lighting
- Applications that require high lumen output or have high temperatures

DESIGN EXAMPLE

STRADA-2X2S-T3 – ME4a road with a good uniformity (0.52)

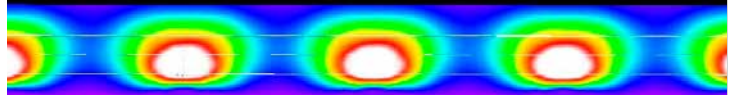
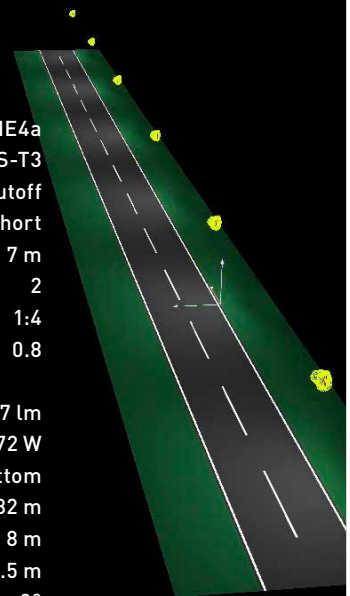
Lighting Class:	ME4a
Optics:	STRADA-2X2S-T3
Cutoff classification:	Cutoff
Distribution:	Type III, Short
Road width:	7 m
Number of lanes:	2
Pole distance ratio:	1:4
Maintenance factor:	0.8

Luminous flux (Luminaire):	7437 lm
Power (Luminaire):	72 W
Arrangement:	Single row, bottom
Pole distance:	32 m
Mounting height:	8 m
Overhang:	0.5 m
Boom angle:	0°

All lighting performance requirements are met

L_{av} [cd/m ²]	U0	UI	TI (%)	SR
0.76	0.52	0.74	7	0.57
≥0.75	≥0.40	≥0.60	≤15	≥0.50
✓	✓	✓	✓	✓

RESULTS:	
Average:	13 lx
Min:	5 lx
Max:	27 lx
u0:	0.40





STRADA-2X2S FAMILY

COMPATIBILITY

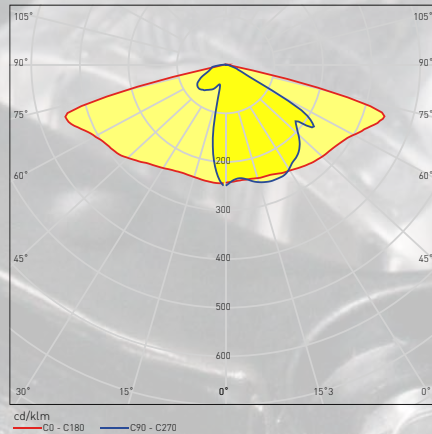
- Optimized for a range of 3535 high power and compatible up to 5050 LED packages

STRADA-2X2S-T3

Dimensions: 50x50 mm

Height: 7,23 mm

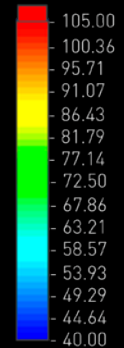
Typical efficiency: 90%



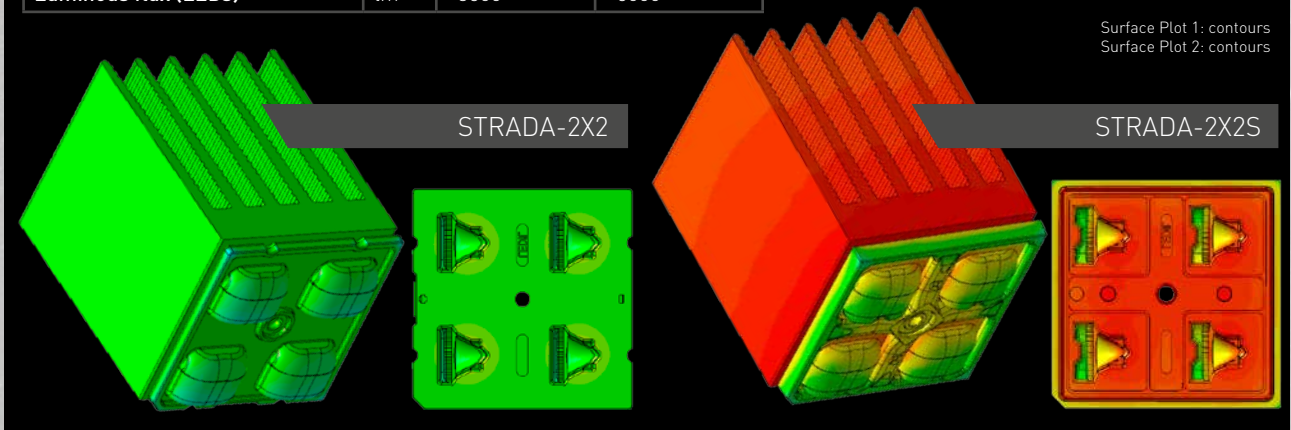
HEAT SIMULATION

Goal Name	Unit	STRADA-2X2	STRADA-2X2S
Optics Material	-	PMMA	Silicone
Ambient Temperature	[°C]	25,0	25,0
Lens Max Temperature	[°C]	80,5	103,1
LEDs Max Temperature	[°C]	111,1	153,3
PCB Max Temperature	[°C]	101,7	138,4
Heat sink Max Temperature	[°C]	80,4	104,7
Lens holder Max Temperature	[°C]	-	101,1
Power (LEDs)	W	28	44
Luminous flux (LEDs)	lm	~3500	~5000

When driving the LEDs on maximum usage temperature you can get 40% more lumens from the same area with more temperature resistant STRADA-2X2S.



Surface Plot 1: contours
Surface Plot 2: contours



ORDERING INFORMATION

Consult www.ledil.com/2x2s for ordering codes and latest product specifications, which may vary by LED.