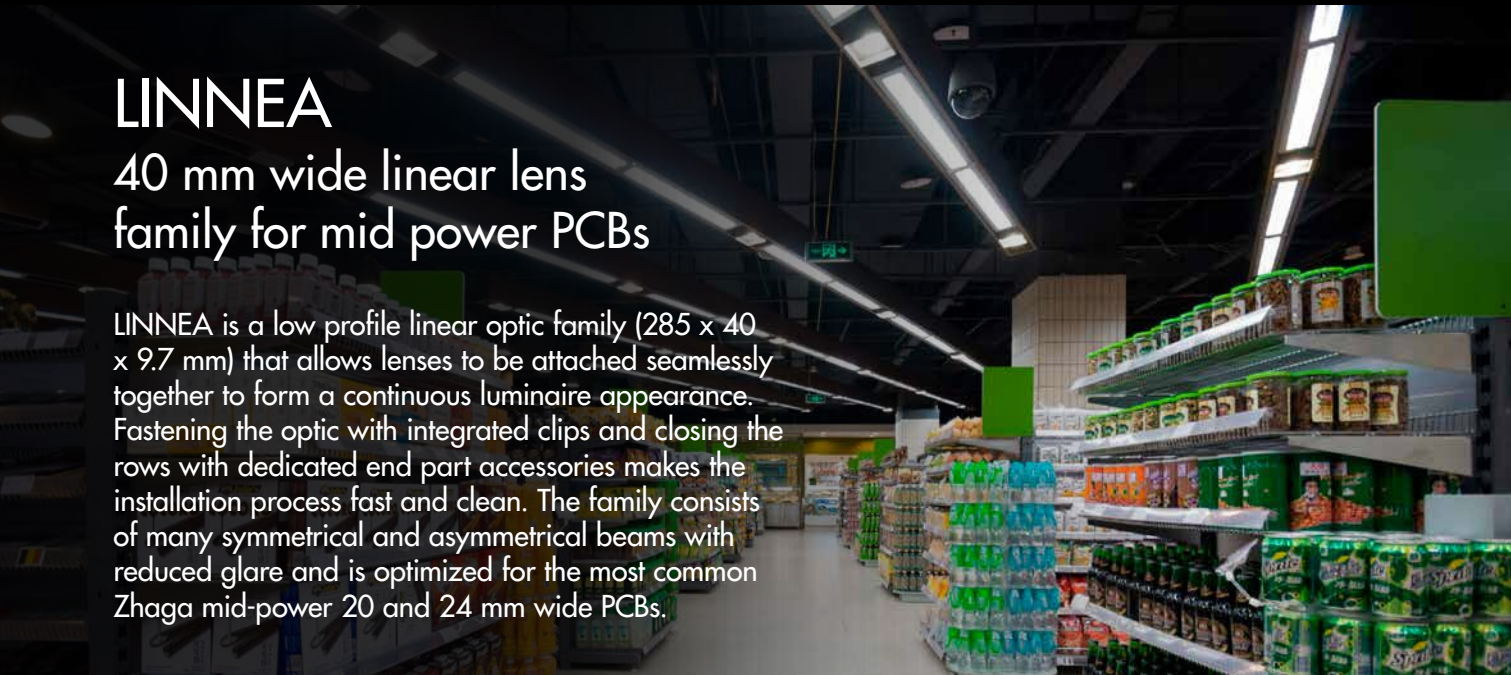


LINNEA

40 mm wide linear lens family for mid power PCBs

LINNEA is a low profile linear optic family (285 x 40 x 9.7 mm) that allows lenses to be attached seamlessly together to form a continuous luminaire appearance. Fastening the optic with integrated clips and closing the rows with dedicated end part accessories makes the installation process fast and clean. The family consists of many symmetrical and asymmetrical beams with reduced glare and is optimized for the most common Zhaga mid-power 20 and 24 mm wide PCBs.



NEW

LINNEA-O

Oval shaped light distribution ideal for shelf and aisle lighting

FEATURES

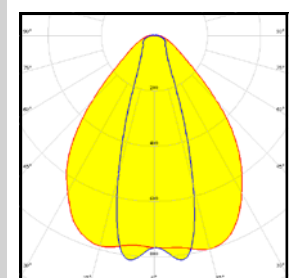
- Off-the-shelf linear optics fitting into old and new luminaire designs with wide PCB compatibility
- Advanced optical control with great colour uniformity and reduced longitudinal glare
- Extremely fast to assemble with integrated clips and optional end caps

TYPICAL APPLICATIONS

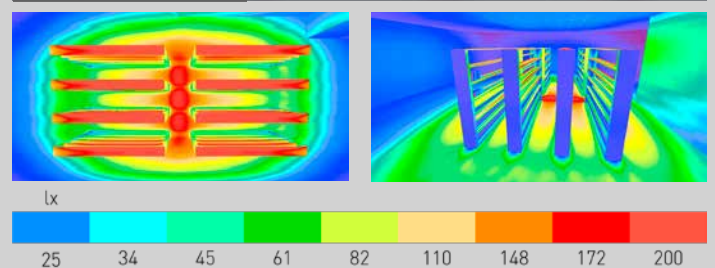
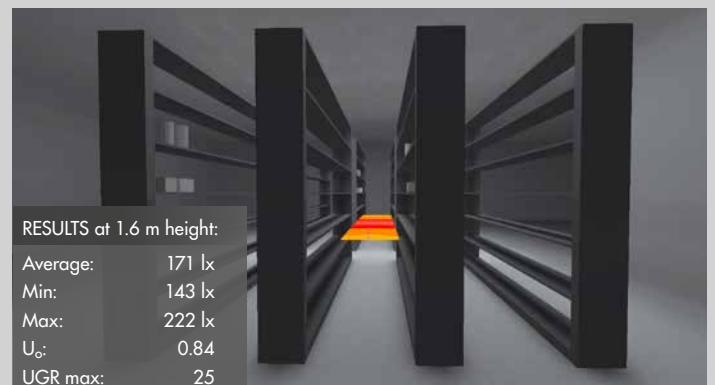
- Retail and supermarkets
- Industrial
- High bay

DESIGN EXAMPLE

LED:	SAMSUNG LMB561+
Luminous flux (Luminaire):	3347 lm
Power (Luminaire):	27 W
Luminous efficacy:	124 lm/W
Efficiency:	84 %
Mounting height:	9 m
No. of luminaires in a row:	8 pcs
No. of luminaires in total:	40 pcs



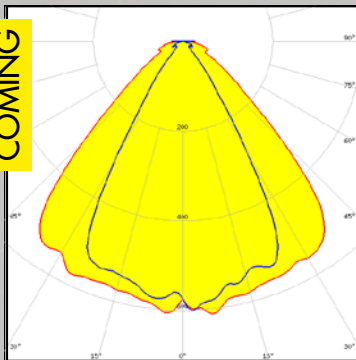
LINNEA-O



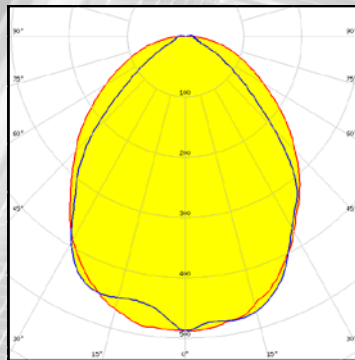
COMPATIBILITY

- Optimized for the most common Zhaga mid-power 20 mm and 24 mm wide PCBs
- Optimized for 1.0 mm thick profiles, and B-variants for 0.5 mm profiles

COMING

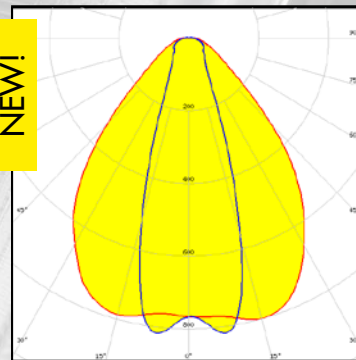


F15524_LINNEA-60
F15941_LINNEA-60-B

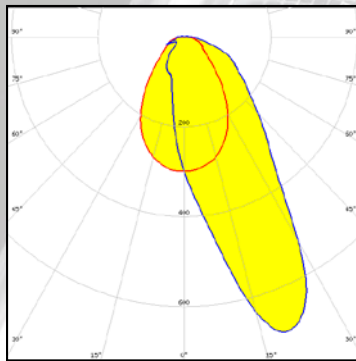


F15523_LINNEA-90
F15940_LINNEA-90-B

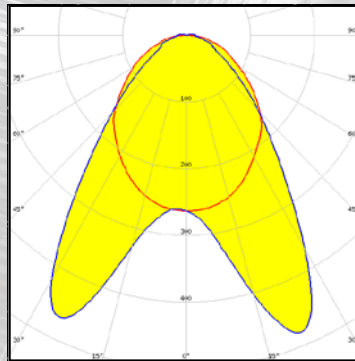
NEW!



F15756_LINNEA-O
F15952_LINNEA-O-B

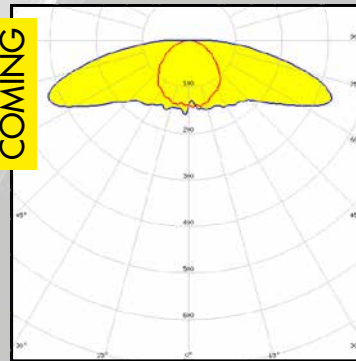


F15861_LINNEA-ZT25
F16000_LINNEA-ZT25-B



F15860_LINNEA-Z2T25
F15999_LINNEA-Z2T25-B

COMING



F16048_LINNEA-UP
F16049_LINNEA-UP-B

ORDERING INFORMATION

Consult www.ledil.com/linnea for ordering codes and latest product specifications, which may vary by LED.