

## GABRIELLA

Ø38 and Ø45 mm RGB and tuneable white colour mixing lens family

GABRIELLA is an RGB and tuneable white colour mixing family with LEDiL's unique floret-type hexagonal surface ensuring excellent colour uniformity. The optic comes with a black holder with positioning pins in both holder and lens making assembly easy and accurate. GABRIELLA is available with or without tape. The 10° spot and wide beams will be followed by a medium beam in 45 mm diameter as well as in a smaller 38 mm diameter.

### FEATURES

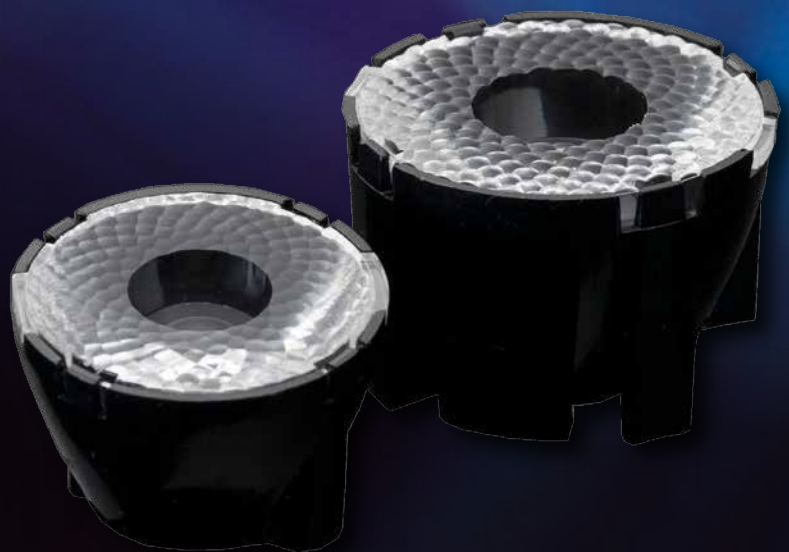
- Special optic surface for uniform colour mixing
- Supports the latest RGBW LEDs
- Available in two sizes
  - Ø45 mm GABRIELLA
  - Ø38 mm GABRIELLA-MIDI
- Holder design allows more space for components
- Accurate assembly with positioning pins
- Can be assembled with screws or installation tape

### TYPICAL APPLICATIONS

- Stage lighting
- Architectural lighting
- Accent lighting

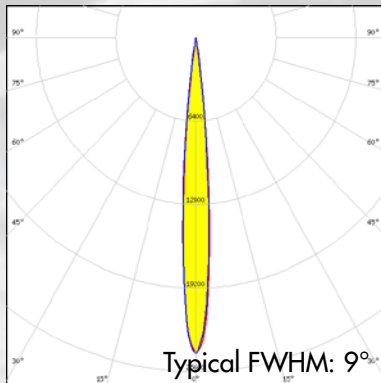
### COMPATIBILITY

- Optimized for 5050 and compatible with up to 7070 size RGB LED packages



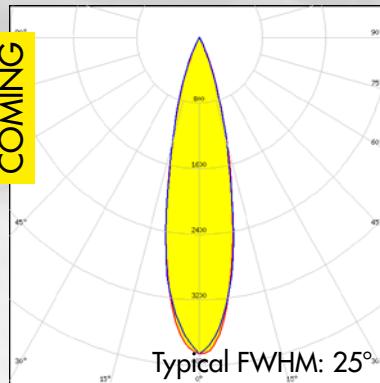
### GABRIELLA-45

- Diameter: 45 mm
- Height: 29 mm

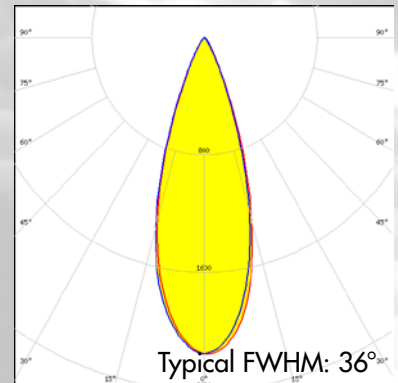


GABRIELLA-45-S

COMING



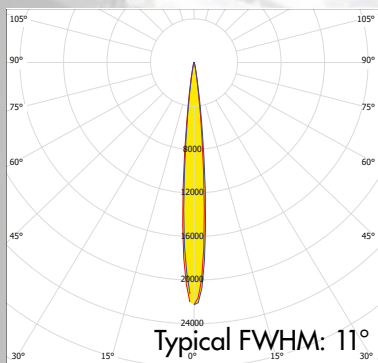
GABRIELLA-45-M



GABRIELLA-45-W

### GABRIELLA-MIDI

- Diameter: 38 mm
- Height: 24 mm



GABRIELLA-MIDI-S

### ORDERING INFORMATION

C16193\_GABRIELLA-MIDI-S

CA16202\_GABRIELLA-MIDI-S

CN16208\_GABRIELLA-MIDI-S

C15813\_GABRIELLA-45-W

CN15816\_GABRIELLA-45-W

CX15819\_GABRIELLA-45-W

Go to [www.ledil.com/gabriella](http://www.ledil.com/gabriella) for ordering codes and latest product specifications.