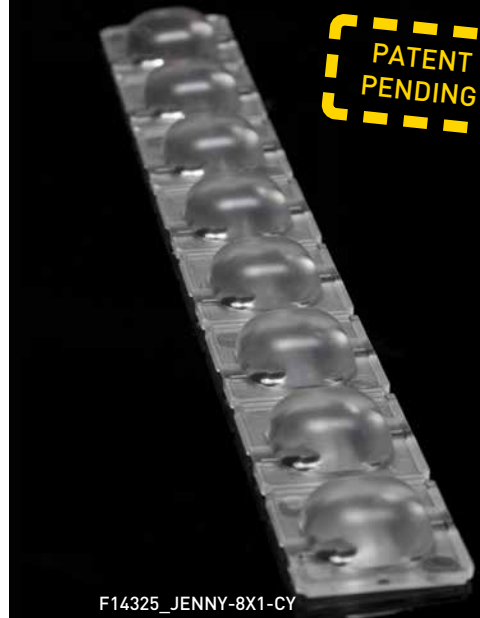




F14326\_JENNY-8X1-T4



F14325\_JENNY-8X1-CY

## JENNY – A cost effective silicone lens family for high power multi-crystal and COB LEDs

LEDiL's JENNY is a cost effective silicone lens family designed for a range of smaller LES sizes COBs from brands like Cree, Osram and Citizen. JENNY-CY typical applications include indoor and outdoor area lighting and canopy lighting. JENNY-T4 version with IESNA roadway class Type IV light distribution to be used for area lighting, such as parking lots or wide complex roads with conflict areas.

- Designed to be used as single optics or in array configurations
- Available as a single lens with holder or 2x2 holder setup or in a 8X1 module
- Features easy positioning with

pins and installation by gluing or with additional holder

- Excellent thermal withstanding
- Easy to achieve ingress protected luminaire design by using glue for installation



F14563\_JENNY-T4



F14531\_JENNY-CY

- Lens is injection molded optical grade silicone
- Dimensions  
 JENNY-CY: 35 x 35 x 11mm  
 JENNY-8X1-CY: 280 x 35 x 11 mm  
 JENNY-T4: 280 x 35 x 17 mm
- Typical efficiency:  
 JENNY-CY: 94%  
 JENNY-T4: 92%
- Typical FWHM:  
 JENNY-CY: 106+106°  
 JENNY-T4: Asymm.
- Optional holders available:  
 Single holder 34.8x50x5mm  
 and 2x2 holder 90x90x6mm
- Can be installed with glue or optional holder



F14653\_JENNY-2X2-HLD

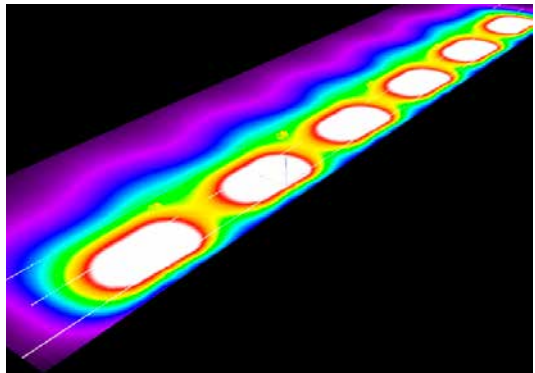
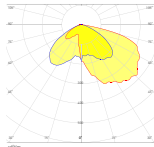


C14436\_JENNY-HLD-A-BLK

## APPLICATION EXAMPLE

### STREET LIGHTING WITH JENNY-T4

- Road width 12 m
- Pole height 8 m
- Pole distance 22 m
- Each lamp driven by 9500lm
- $E_{av}$ : 19 lx,  $E_{max}$ : 35 lx
- $u0$ : 0,555
- Selected lighting class ME4a



	$L_{av}$ [cd/m <sup>2</sup> ]	U0	U1	Tl (%)
Calculated values:	0.80	0.43	0.69	4
Required values:	≥0.75	≥0.40	≥0.60	≤15
Fulfilled/Not fulfilled	✓	✓	✓	✓

### SERVICE STATION SIMULATION WITH F14325\_JENNY-8X1-CY

- Luminance:  
 Average 200 lx  
 Around the pumps 80-120 lx
- Distance of luminaires 5 m by 5 m
- Installation height 4 m
- 7.2 klm / luminaire

