



ZENIA – Linear optics for lighting with mid-power LEDs

PATENT
PENDING

- Linear optics designed to illuminate backdrop inside the shelves
- Also suited for wall-washing and stair lighting applications
- Linear optics that work with any distance between the mid-power LEDs
- Completely smooth outer surface
- Flat design (6mm) is easy to integrate for best usage of available space
- Dimensions: 120 x 16 x 6 mm
- Modular breakable design at 15mm intervals allows installation to any width
- Tilted narrow beam prevents unwanted light spill
- For a range of mid-power LEDs choice depending on the need of the user
- Designed to be installed as such or into an aluminium profile like Klus Giza AL-profile



Profile installation

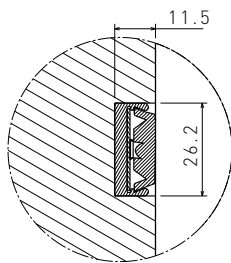
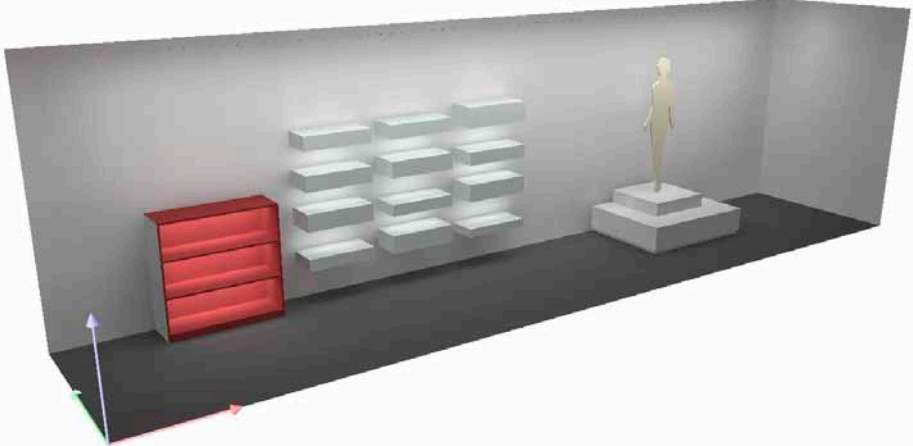
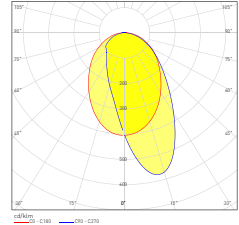
ZENIA application example

Wall washing and shelf lighting with ZENIA optics:

Luminaires are installed in
12 cm intervals.
Output of a 1.2 m long
track is 4160 lm

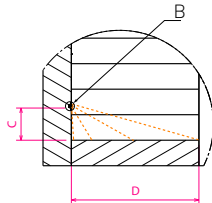
Typical average illuminance in linear assembly using LG 5630

- Wall: 400 lux
- Shelf: 3000 lux

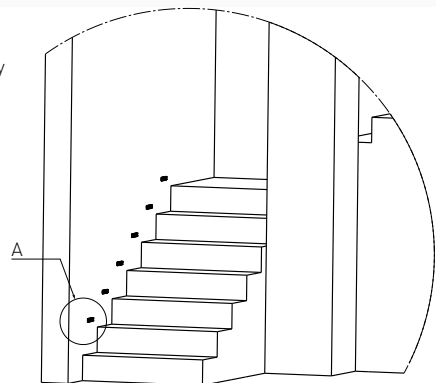


Detail B
Scale: 10:7

Recommended assembly
distance:
 $C/D \sim 1/3$



Detail A
Scale: 2:35



Visit www.ledil.com/zenia for more information