

ME2 Street¹⁾ – Application Case

Application requirements

Target application:	Street
Street setup:	W 10.5m; 3 lanes; Tarmac R3
Luminaire setup:	14m High; 42m distance; 0m overhang; with 0.5m arm
Applicable Specifications:	EN 13201; ME2

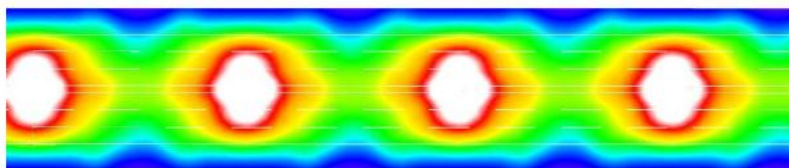
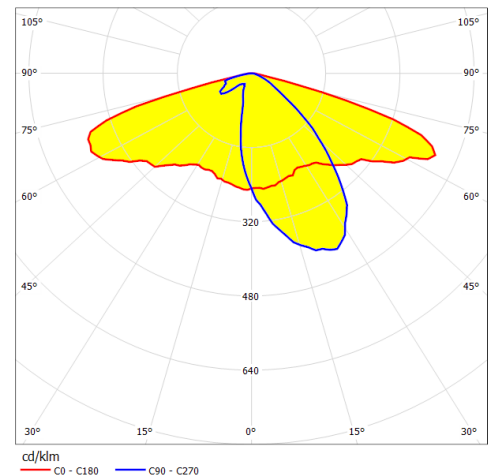
C12449_Strada-T-6x1-DWC²⁾

- Designed for street lighting
 - Asymmetric light distribution
 - Wide batwing light distribution
 - Good longitudinal uniformity control
 - Low glare
- Optimal mechanical design
 - Environmental sealing possible
 - Multi-lens module
 - Low profile lenses
- Over 90% optical efficiency
 - Optical grade PMMA lens
 - Extra glass cover not needed



Results with example lens

LED output per luminaire: 17600 lumens
ME2 requirements passed with given luminaire setup



L_{av} [cd/m ²]	U0	UI	TI [%]	SR
1.54	0.43	0.80	10	0.83
≥ 1.50	≥ 0.40	≥ 0.70	≤ 10	≥ 0.50
✓	✓	✓	✓	✓

1) ME2 Street refers to a street lighting setup designed to pass ME2 requirements on EN 13201 standard.

2) Lens specified in the example is not the only solution for specified application. LEDiL offers other lenses also suitable for the application.