



LEDiL's ANGELETTE family

– Highly pleasing and uniform indoor architectural lighting

ANGELETTE-WAS – a wall-washer that uniquely utilizes the efficiency of COB's in wall washing, providing a heretofore unseen uniformity and light pattern quality.

ANGELETTE-WAS will be accompanied in Q4/2014 with three new symmetrical versions: -S, -M and -WW.

- ANGELETTE's smooth, glare-free and uniform light pattern is optimized for highest quality office, hospitality and museum lighting

- Part of LEDiL's System Reflector philosophy with plastic LEDiL clamps
- Works with a multitude of solderless connectors such as TE, Molex, Ideal and BJB

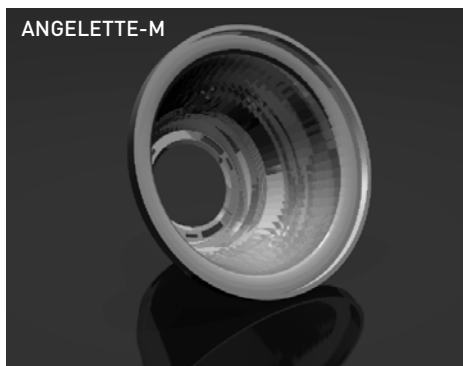
ANGELETTE-WAS

- Diameter: 97.2 x 83.4 mm
- Height: 84 mm*
- Typical efficiency: 92%
- Beautiful & uniform illumination from floor to ceiling
- Highest quality wall-washing optimized for COB's with LES \approx 14 ... 22 mm
- For track lights only

New ANGELETTE angles coming soon

- ANGELETTE-S \approx 15°
- ANGELETTE-M \approx 50°
- ANGELETTE-WW \approx 70°
- Diameter: 110 mm
- Height: \approx 60 mm*
- Smooth, uniform and glare low UGR reflector design for office, hospitality and museum lighting applications
- A series of accessories in the pipeline, such as cover lens, diffuser and shade options

* Depending on a connector, add 3-7 mm to the total height



APPLICATION EXAMPLE

Typical application of ANGELETTE-WAS

- Ceiling height 4 meters, wall width 12 meters, 15 luminaires installed on a track suspended 20 cm lower
- Track installed 1,5 meter distance from the wall
- Distance between luminaires 80 cm
- Luminaire flux with each luminaire 4000 lm
- $E_{av} = 755 \text{ lx}$,
 $E_{max} = 1340 \text{ lx}$, $U_0 = 0.1614$

