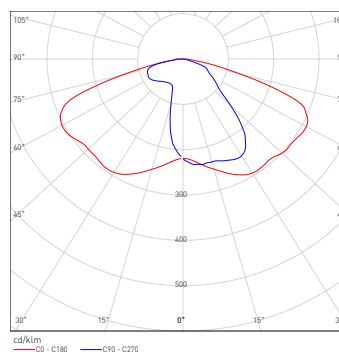




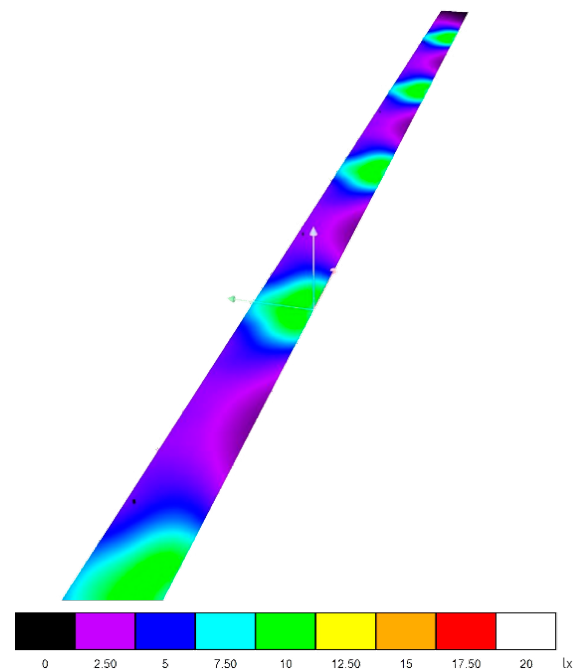
Lighting Class S4 compliant Bicycle Lane Lighting with STELLA-A

Application requirements

Target application: Bicycle Lane Lighting
 Requirements: Lighting Class S4 compliant
 illuminance levels on the bicycle lane

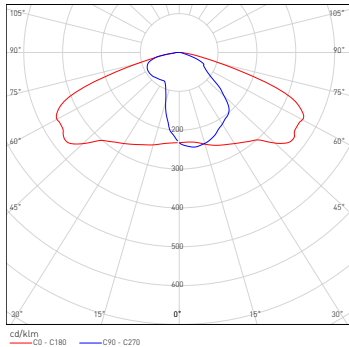


STELLA-A (CXA1816)

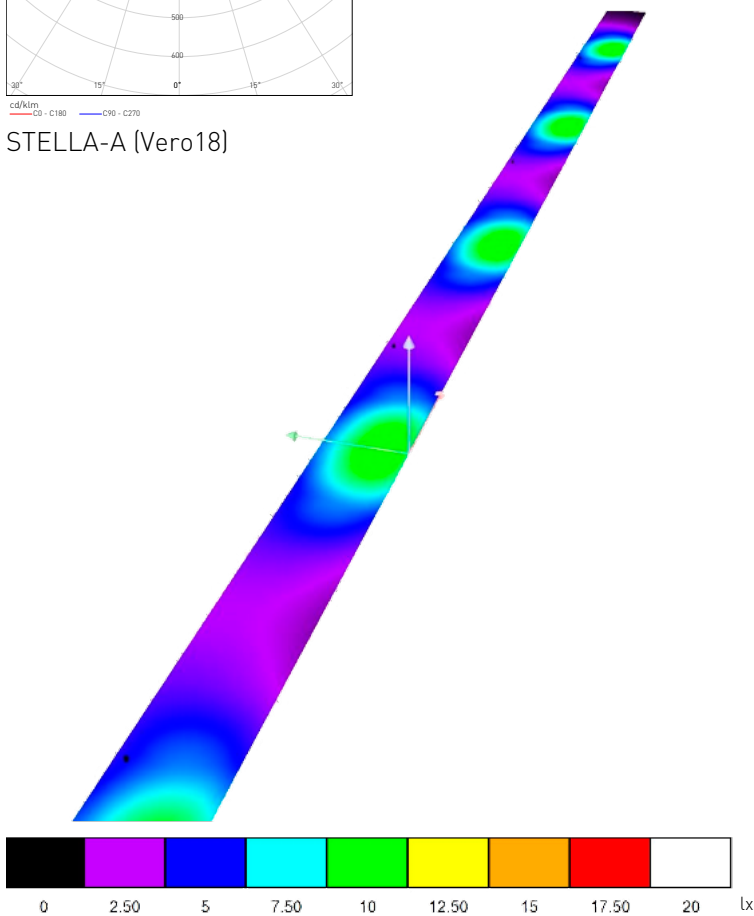




Application simulation



STELLA-A (Vero18)



Simulated results:

STELLA-A CXA1816

Luminous flux (luminaire): 936 lm

Luminaire wattage: 8.7 W

Arrangement: Single row, bottom

Pole distance: 18 m

Mounting height: 4 m

Overhang: 0.5 m

Boom angle: 0.0°

Boom length: 1.2 m

Simulated bicycle lane lighting fulfills the Lighting Class S4 demands regarding:

- E_{av} (lx): 5.03 lx (required values according to class ≥ 5.00 lx)
- E_{min} (lx): 1.87 lx (required ≥ 1.00 lx)

STELLA-A Vero18

Luminous flux (luminaire): 1012 lm

Luminaire wattage: 9.3 W

Arrangement: Single row, bottom

Pole distance: 18 m

Mounting height: 4 m

Overhang: 0.5 m

Boom angle: 0.0°

Boom length: 1.0 m

Simulated bicycle lane lighting fulfills the Lighting Class S4 demands regarding:

- E_{av} (lx): 5.36 lx (required values according to class ≥ 5.00 lx)
- E_{min} (lx): 2.17 lx (required ≥ 1.00 lx)

Optics used

FN13323_STELLA-A

- Silicone street lighting lens
- Diameter: 90 mm
- Height: 22 mm
- Typical efficiency 92%
- Excellent thermal properties with very good UV-withstanding and IP-65 rating



FN13323_STELLA-A