

Emergency light ¹⁾ – Application Case

Application requirements

Target application:	Wall emergency light
Target dimensions:	H 2.5m; D 6m
Illuminance requirements:	$E_{min} \geq 0.4$ lux
Applicable Specifications:	EN 54-28

CA12050-Strada-FT-Tape²⁾

Optimal light distribution

- Forward light distribution
- Over 90% optical efficiency

Optimal mechanical design

- Environmental sealing possible
- Double sided tape
- Small footprint



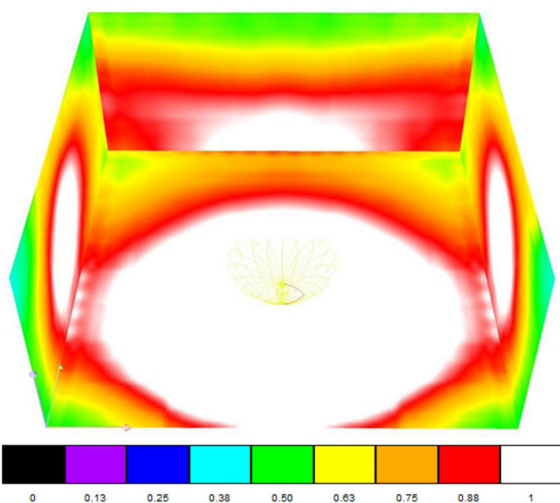
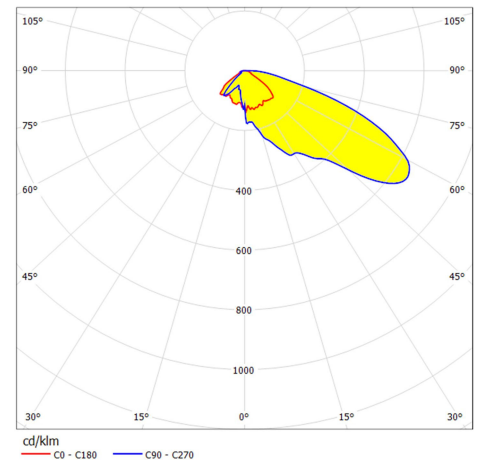
Results with example lens

Meets EN 54-28 requirements

Minimum illuminance on the wall: 0.41lux

Minimum illuminance on the floor: 0.49lux

LED output: 100 lumen



1) Emergency light refers to a lighting design that meets the European EN 54-28 standard for emergency lights.

2) Lens specified in the example is not the only solution for specified application. LEDIL offers other lenses also suitable for the application.